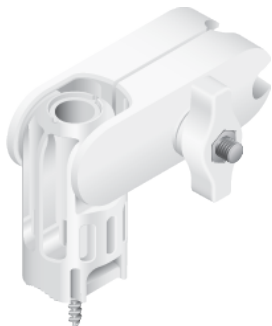


Package Contents



Mount Arm



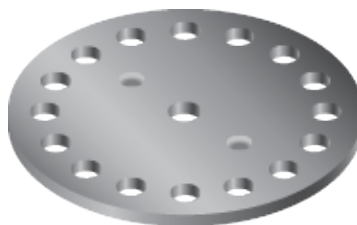
Universal Ball Mount



Bracket Mount



Rotation Collar



Stacking Washer



Ball Mount Washer

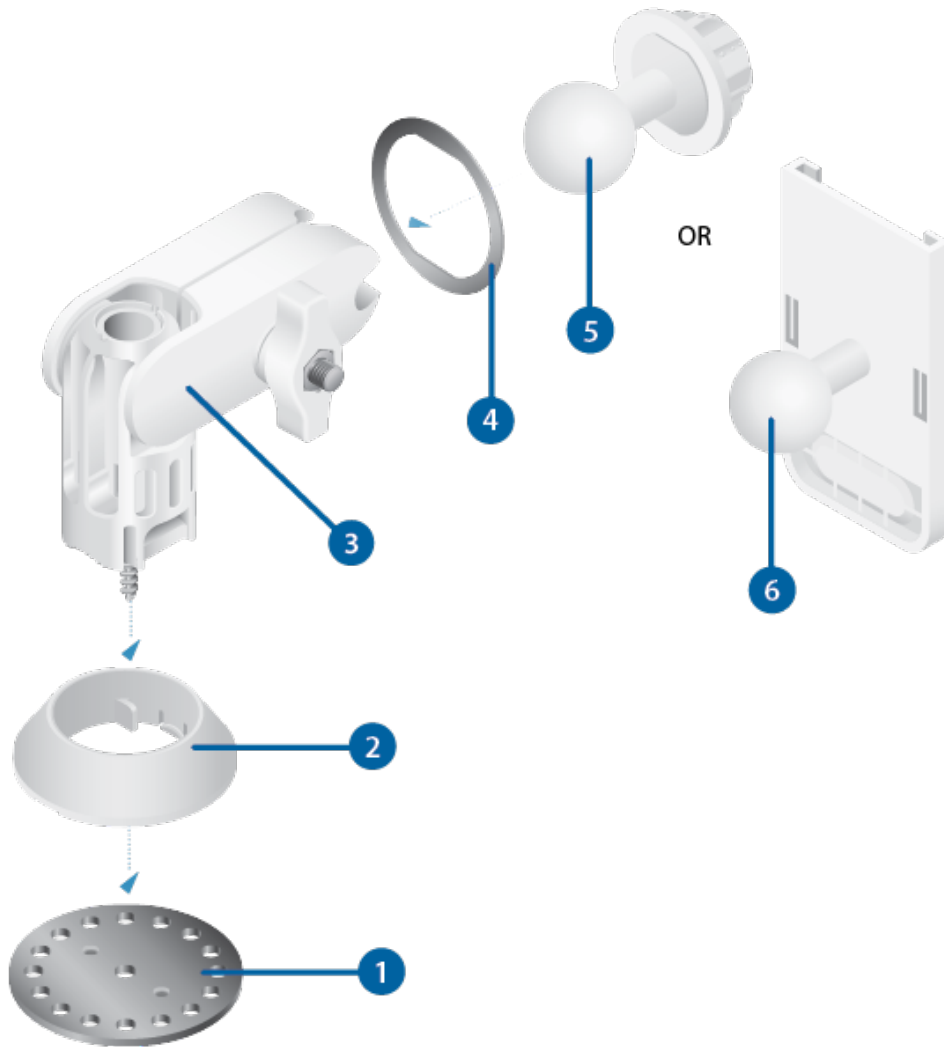
Supported Products

The Quick Mount is compatible with the GigaBeam™, LTU™ Lite, NanoBeam®, NanoStation®, NanoStationloco, and UniFi® Building-to-Building Bridge.

- NBE-2AC-13, NBE-M5-16, UBB, or GBE using the Universal Ball Mount
- NBE-5AC-Gen2 or NBE-M5-19 using the Universal Ball Mount and Metal Washer
- loco5AC, NS-5AC, or LTU-Lite using the Ball Mount Assembly



Hardware Overview



1 Stacking Washer

Part of the Quick-Mount assembly that locks the Rotation Collar into place.

2 Rotation Collar

Part of the Quick-Mount assembly that stabilizes the base of the Mount Arm.

3 Mount Arm

Adjustable mount compatible with a variety of Ubiquiti CPE devices.

4 Ball Mount Washer

Used in conjunction with the Universal Ball Mount when installing the NBE-5AC-Gen2 or NBE-M5-19.

5 Universal Ball Mount

Used when installing the NBE-5AC-Gen2, NBE-2AC-13, NBE-M5-19, NBE-M5-16, UBB, or GBE.

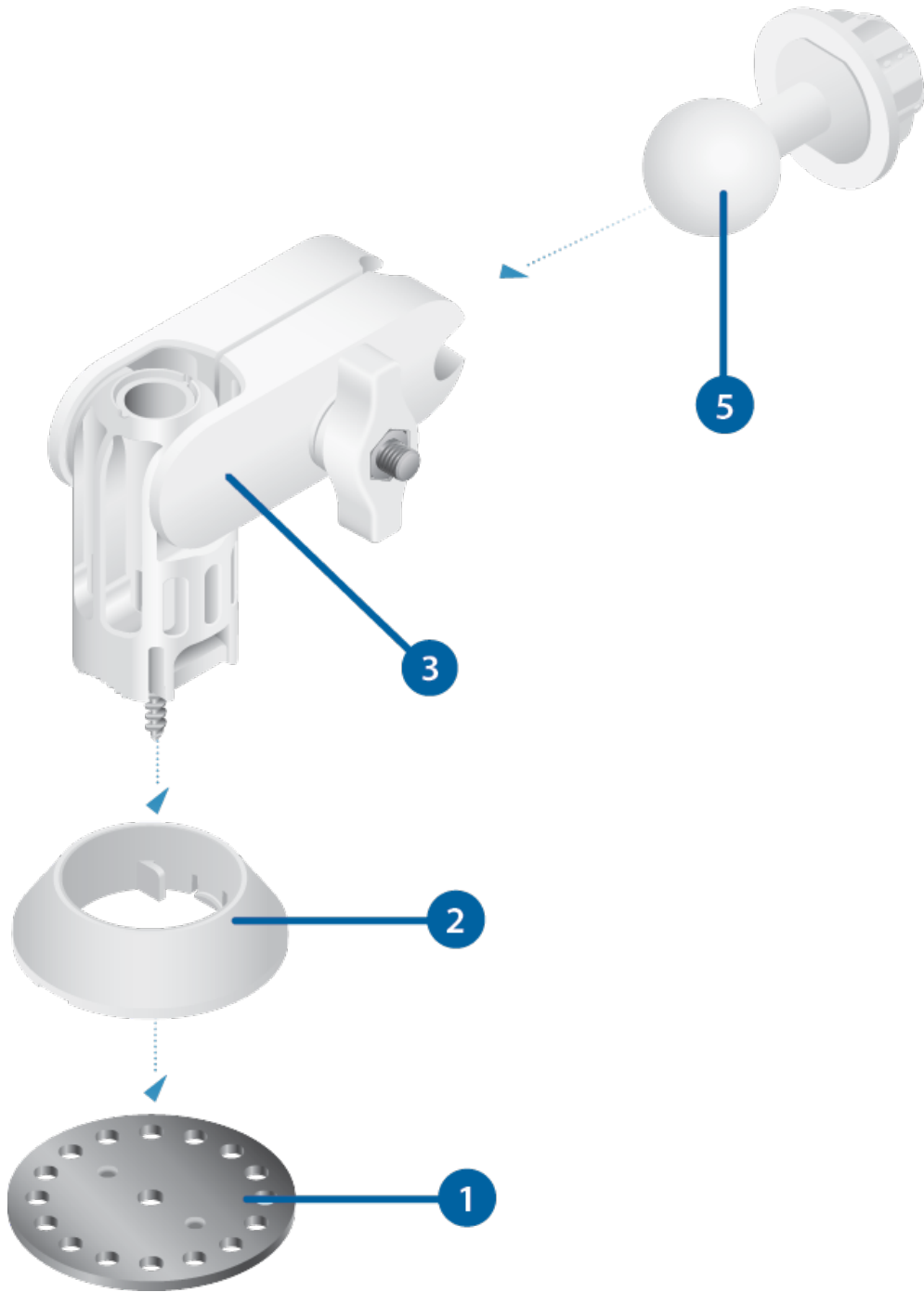
6 Bracket Mount

Used when installing the loco5AC, NS-5AC, or LTU-Lite.

Models

- NBE-2AC-13
- NBE-M5-16
- UBB
- GBE

Components

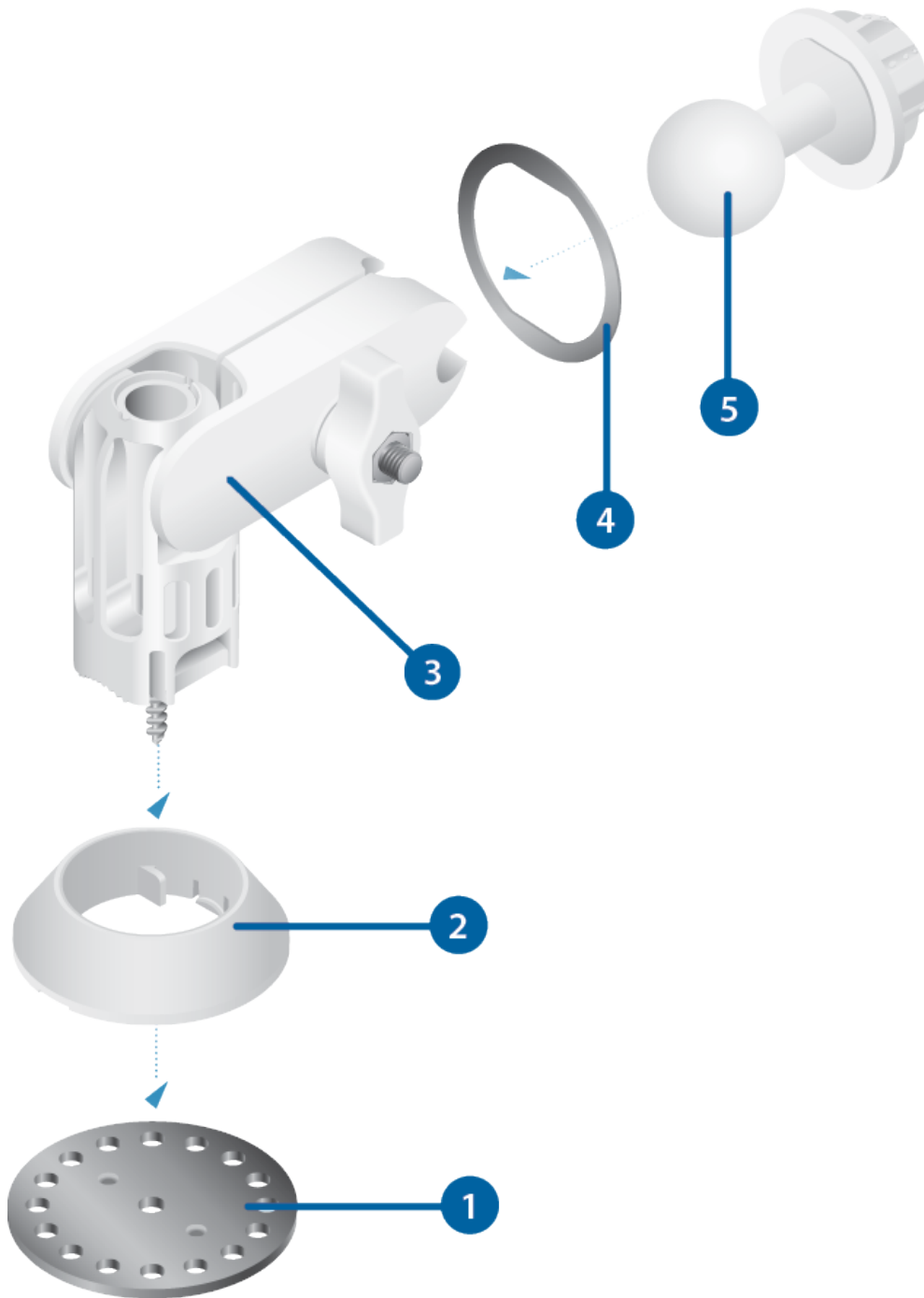


Note: The device's Lock Ring will also be used.

Models

- NBE-5AC-Gen2
- NBE-M5-19

Components

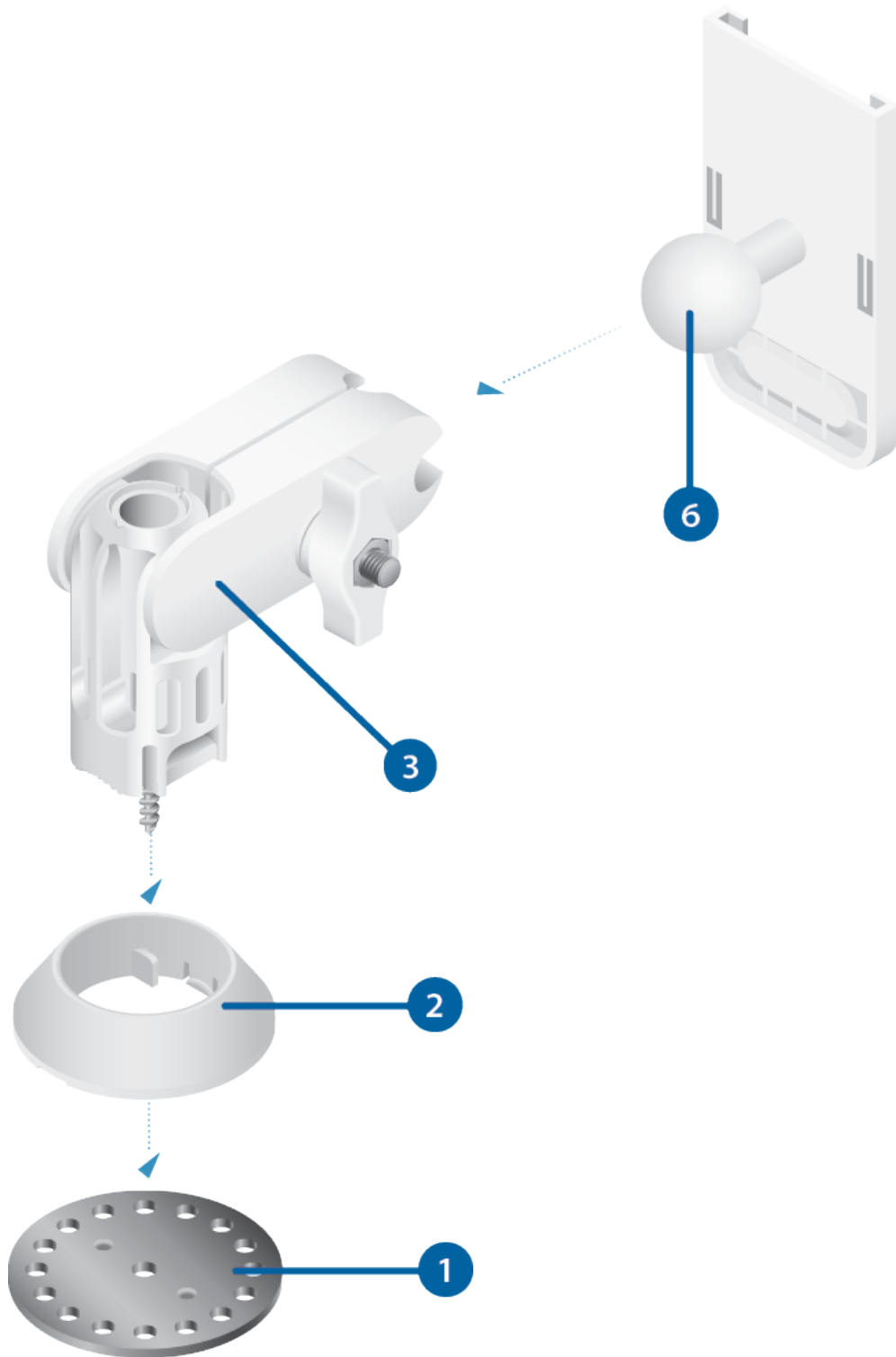


 **Note:** The device's Lock Ring will also be used.

Models

- loco5AC
- NS-5AC
- LTU-Lite

Components



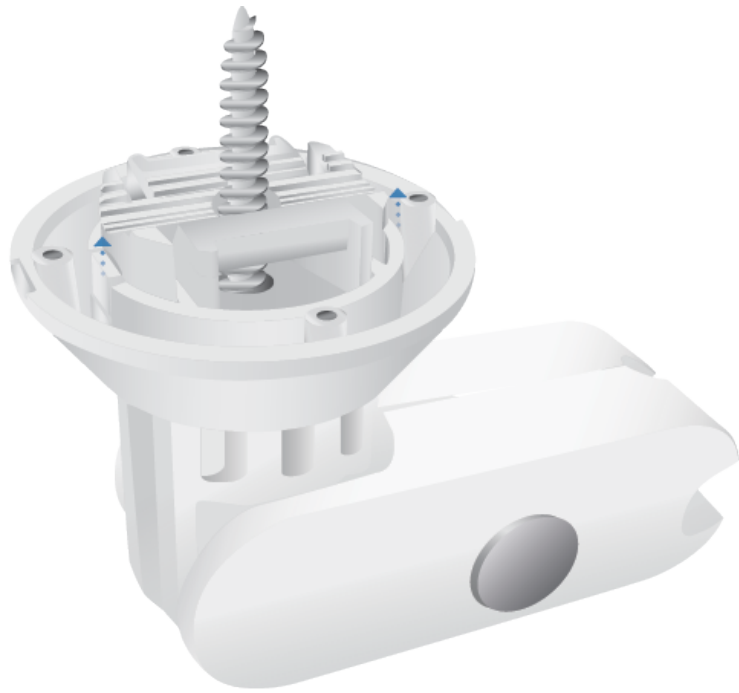
Installation

Before You Begin

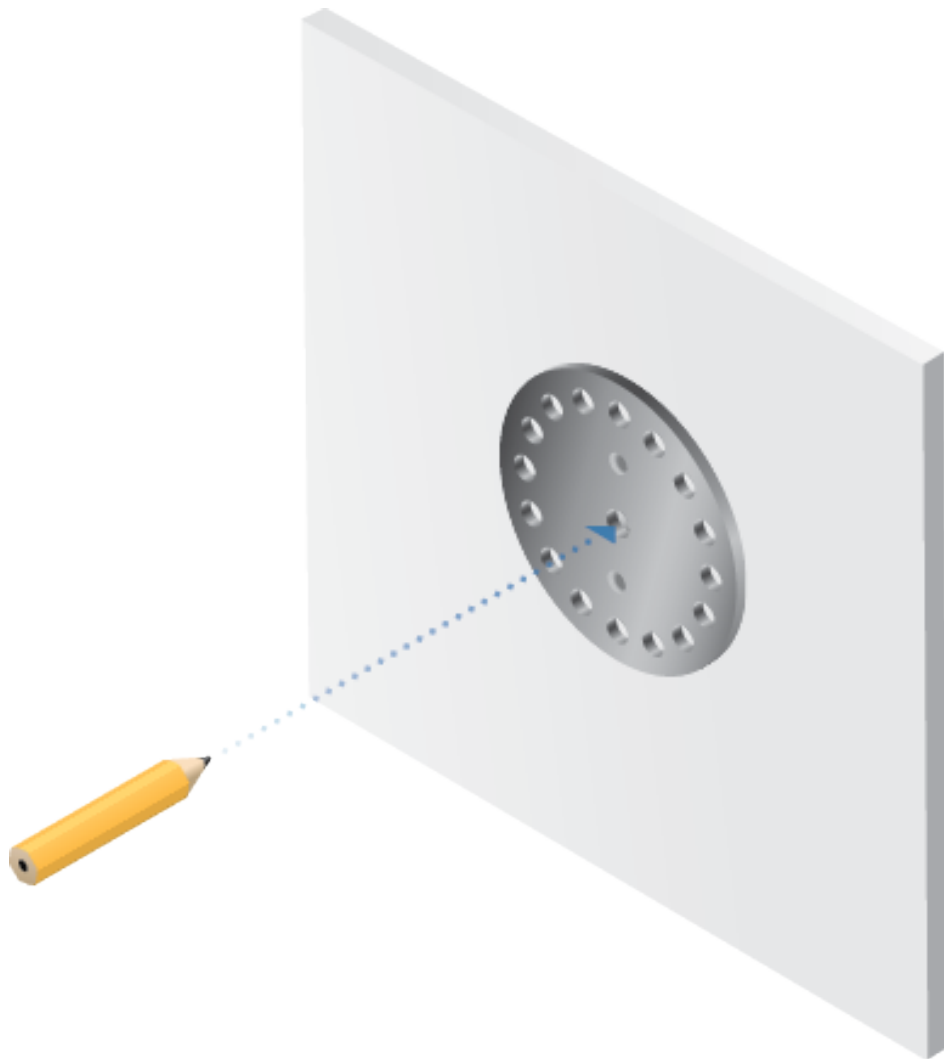
Insert the Mount Arm into the Rotation Collar and press until it is locked in.



Note: The screw end should extend past the Rotation Collar for installation, as shown below.



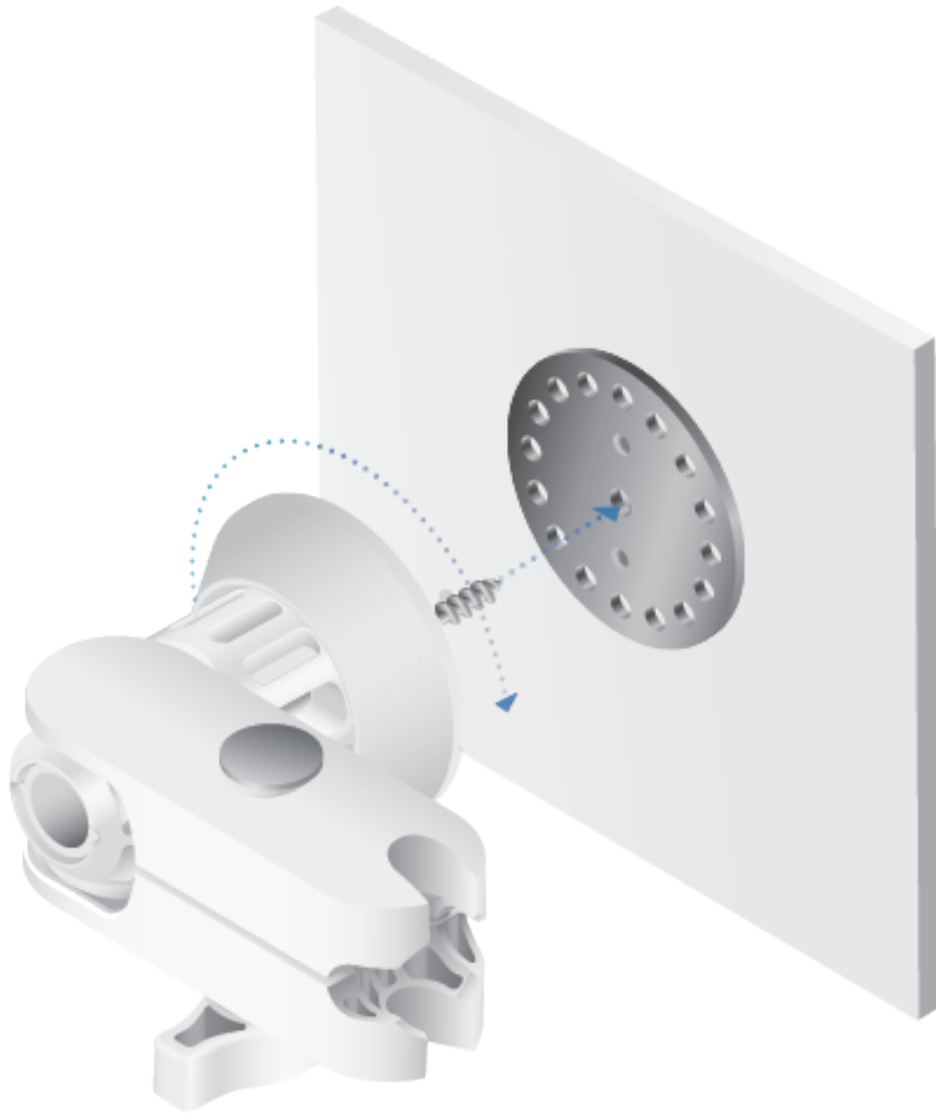
1.



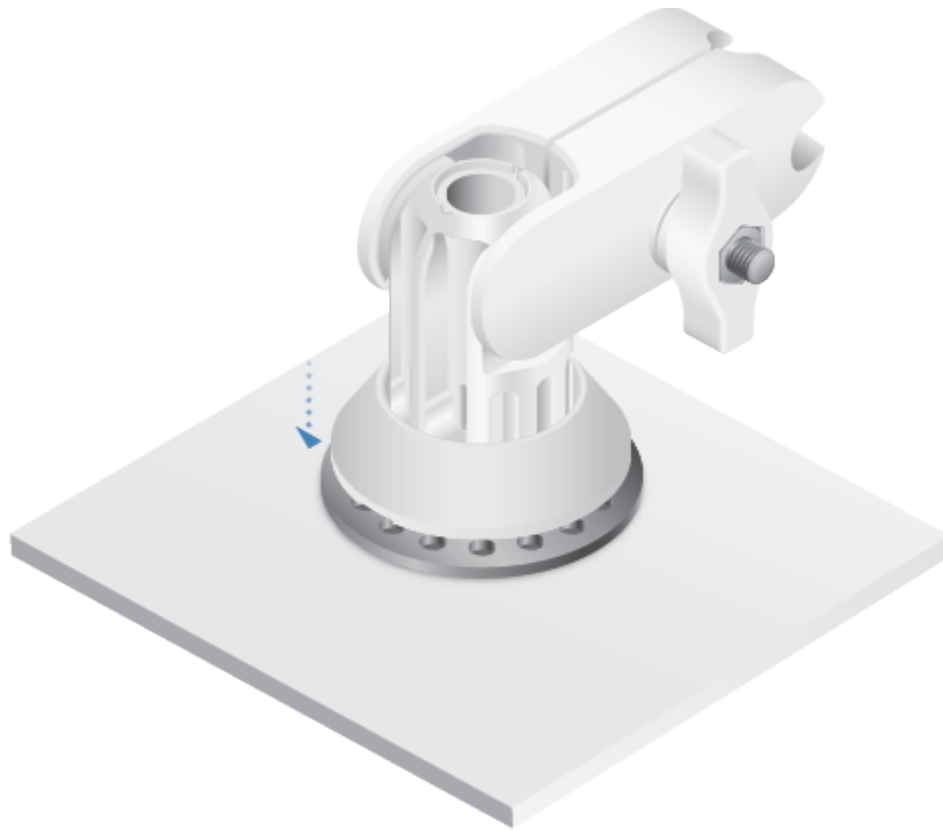
Optional



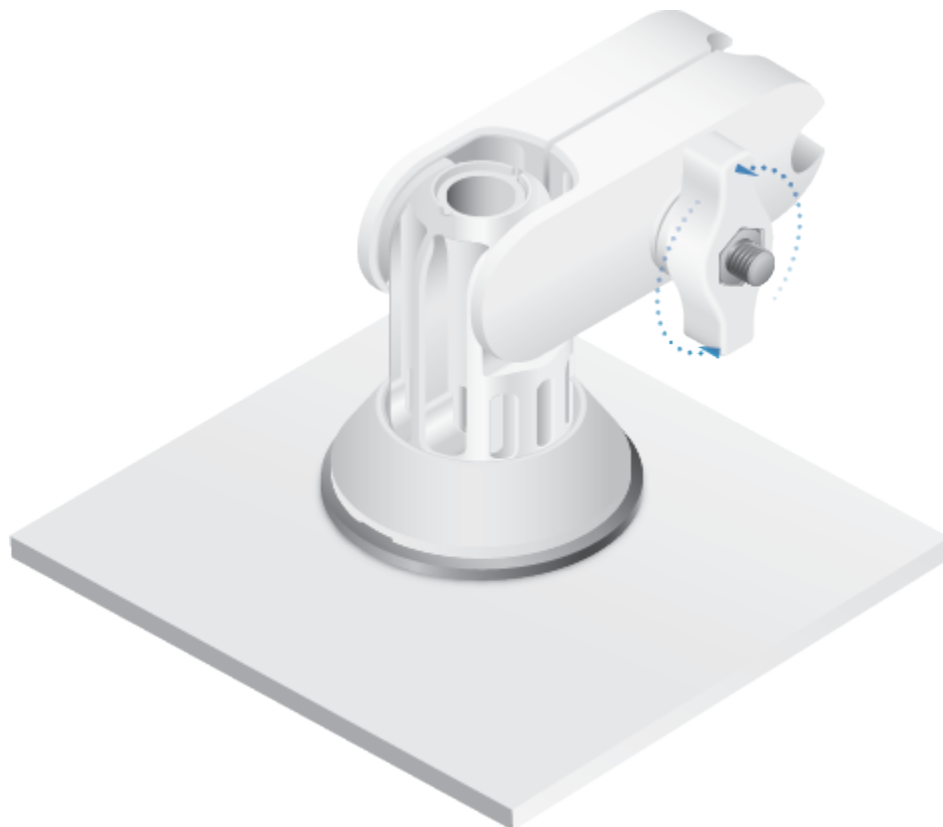
2.



3.



4.



5.

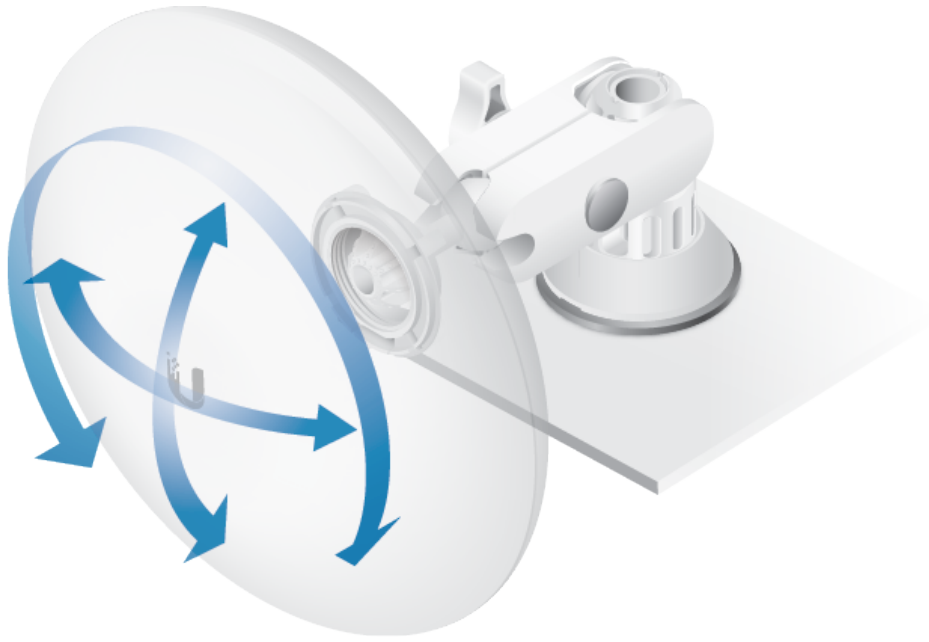


Note: Add the Ball Mount Washer when installing the NBE-5AC-Gen2 or NBE-M5-19.

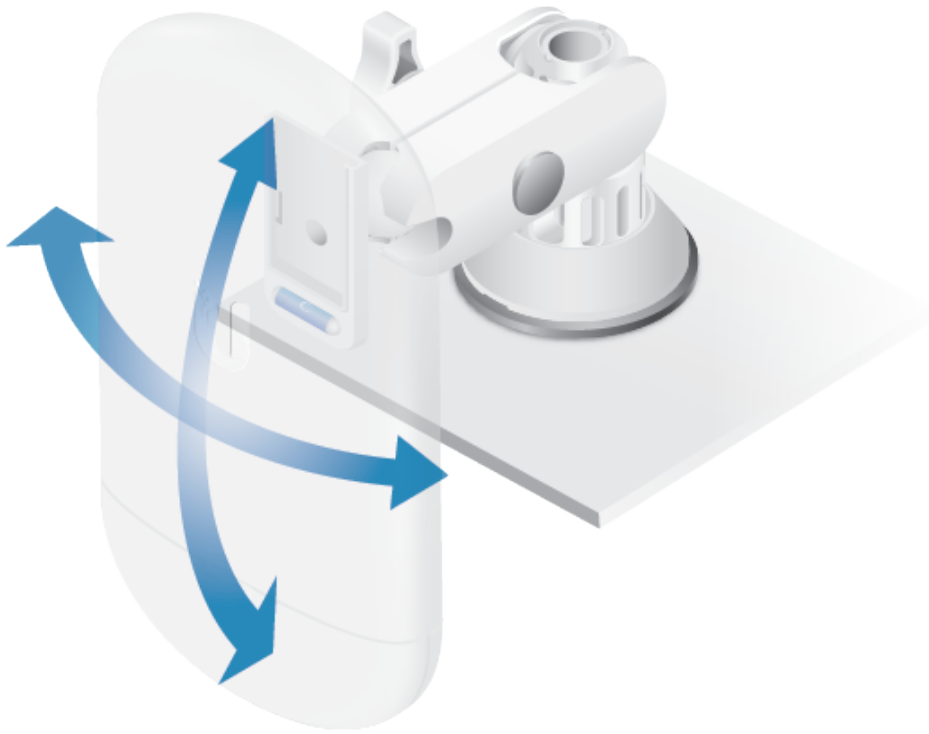
OR



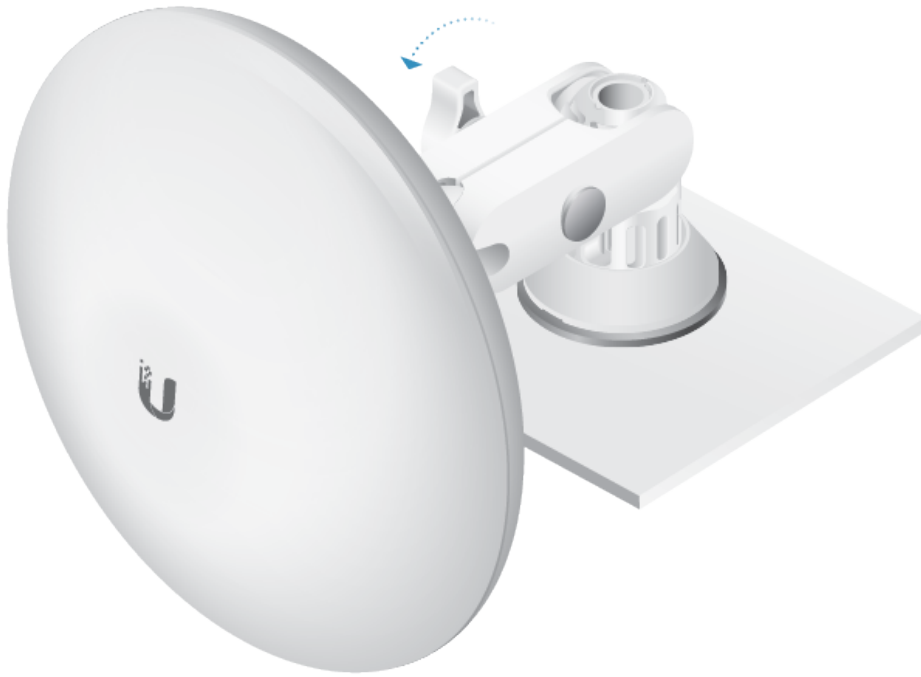
6.



OR



7.



OR



Specifications

--

Dimensions	104 x 122 x 81 mm (4.09 x 4.80 x 3.19")
Weight	375 g (0.83 lb)
Device Support Ball Mount Assembly Universal Ball Mount Universal Ball Mount with Ball Mount Washer	loco5AC, NS-5AC, or LTU-Lite NBE-2AC-13, NBE-M5-16, UBB, or GBE NBE-5AC-Gen2, NBE-M5-19

Limited Warranty

ui.com/support/warranty

The limited warranty requires the use of arbitration to resolve disputes on an individual basis, and, where applicable, specify arbitration instead of jury trials or class actions.

Declaration of Conformity

Online Resources



© 2019-2020 Ubiquiti Inc. All rights reserved.